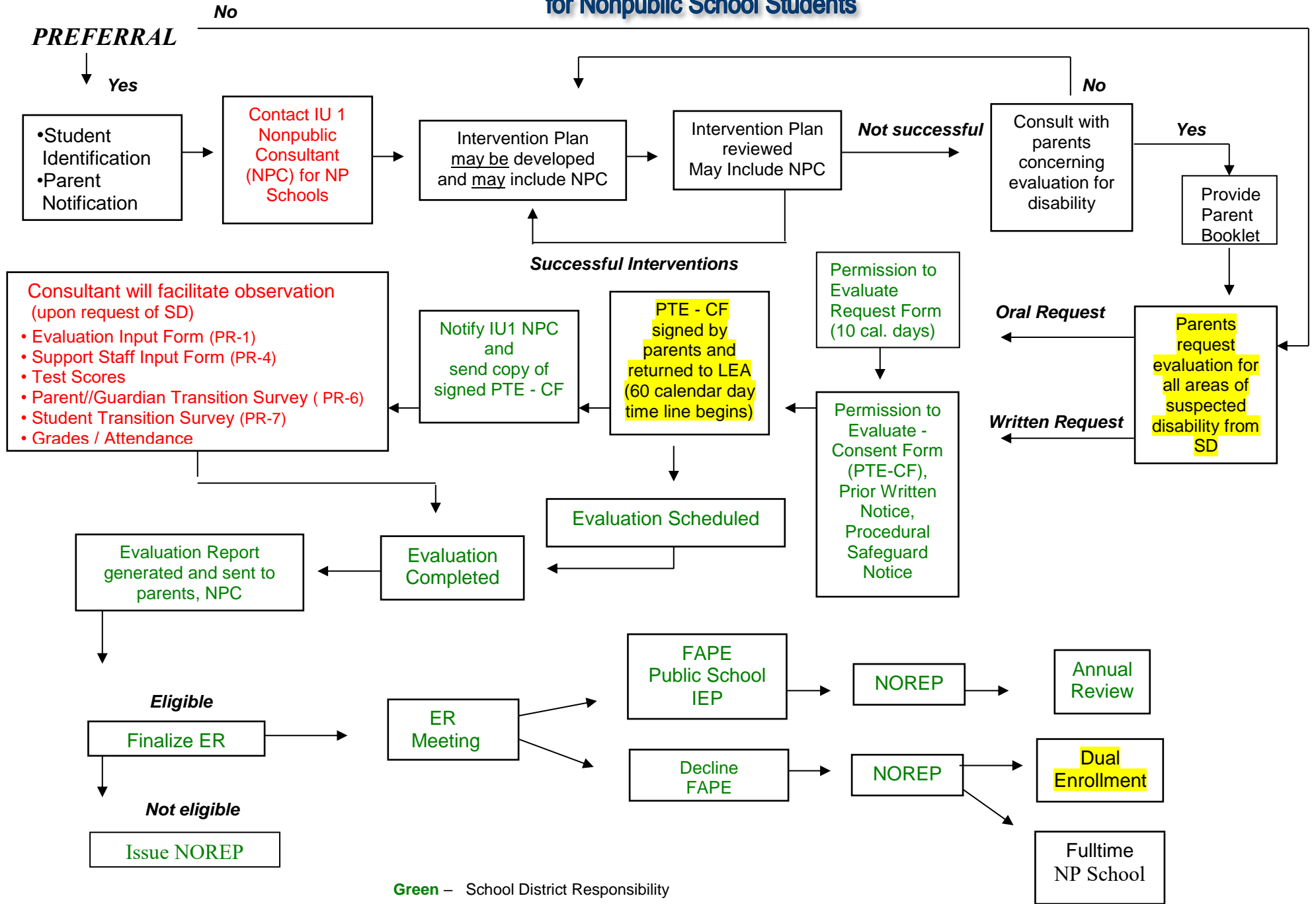


# 2019-2020 School District REFERRAL PROCEDURE for Nonpublic School Students



- Consultant will facilitate observation (upon request of SD)**
- Evaluation Input Form (PR-1)
  - Support Staff Input Form (PR-4)
  - Test Scores
  - Parent//Guardian Transition Survey ( PR-6)
  - Student Transition Survey (PR-7)
  - Grades / Attendance

**Green** – School District Responsibility  
**Red** – IU1 NP Consultant Responsibility (NPC)  
**Yellow** – Parent Responsibility

**Nonpublic Consultant - NPC**